

# Welcome Guide

## Go! Production Suite

# Welcome!

The Go! Production suite allows users to access Enterprise sQ media and services remotely over a connected network on a wide range of devices.

It currently provides access from 3 editor clients:

- **Go!**  
Web-based timeline video editor including VO record, with transitions and media upload.
- **Go! Plugin for Adobe Premiere Pro**  
Use Enterprise sQ content in Premiere Pro as a Download MXF or edit live in-place, and upload flat MXF.



## User accounts, Roles

Every user in an organisation, if desired, can have a user account in the Go! Production Suite, with each user having a username, password and operational role, all initially supplied by the Administrator.

Each user may be assigned one or more of the following roles by an Administrator:

- **Editor** - Can logon to Go!, and access Enterprise sQ content from the Premiere Plugin and QTube Edit.
- **Media Manager** - can also access User Management to reset user passwords, enable and disable user accounts, view system activity and kick user off if they are using too many resources
- **Administrator** - in addition to Editor & Media Manager roles, can create user accounts.

## Passwords

After the initial password is generated, every user can customise their password:

- **Editors:** Logon to Go! and click on the user icon in the top right, select change password

# Go!

## Welcome Guide

---

- **All other users:** Logon to Remote User Management and select the Reset Password task in the top left menu

If the user has forgotten their password:

- **All users and roles:** Go to the logon screen and select **Forgot Password?**



## Concurrent Access Licenses - CALs

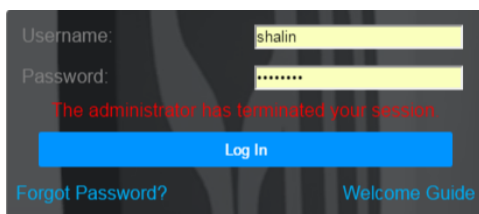
A number of CALs will have been purchased which apply to the entire system. A CAL enables any user to logon, so in a system with 10 CALs, if any 10 users are logged-on and working, the 11<sup>th</sup> user cannot logon until another user logs off, or is kicked off to release the CAL.

## Logoff messages

Users with the Administrator or Media Manager Role can disable any user's account to prevent them from logging on, and kick any user off to release a CAL for another to use.

### Forced log-off

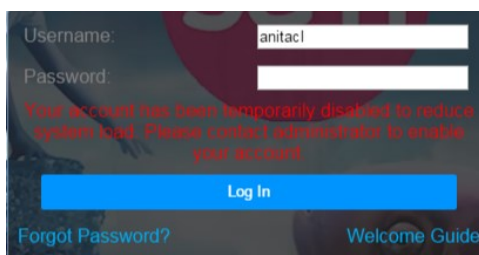
If a user with the Media Manager or Administrator role is forced off by an Administrator they are redirected to the logon screen and presented with the following message:



**"The administrator has terminated your session"**

### Disabled user account

If the Administrator has disabled a user's account, for example to release system resources or CALs for other users, they will get the following message when they try to log on:



**"Your account has been temporarily disabled to reduce system load. Please contact administrator to enable your account"**